



ZRICKS

WANS  
CHIL RAHAMAN





ZRICKS















[www.Zricks.co](http://www.Zricks.co)



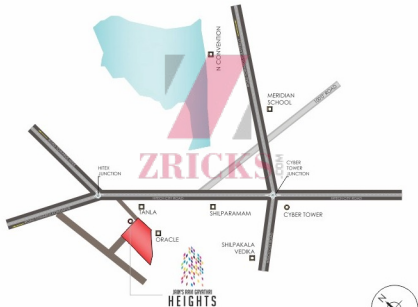


- |                          |                                   |
|--------------------------|-----------------------------------|
| 1. Entrance Arch- 1      | 8. Kids Pool                      |
| 2. Entrance Arch- 2      | 9. Deck                           |
| 3. Parking Way To Cellar | 10. Changing Rooms                |
| 4. Water Feature- 1      | 11. Children Play Area / Sand Pit |
| 5. Water Feature- 2      | 12. Entrance To Club House        |
| 6. Jogging Track         | 13. Entrance To Gym               |
| 7. Swimming Pool         |                                   |



# Site Plan

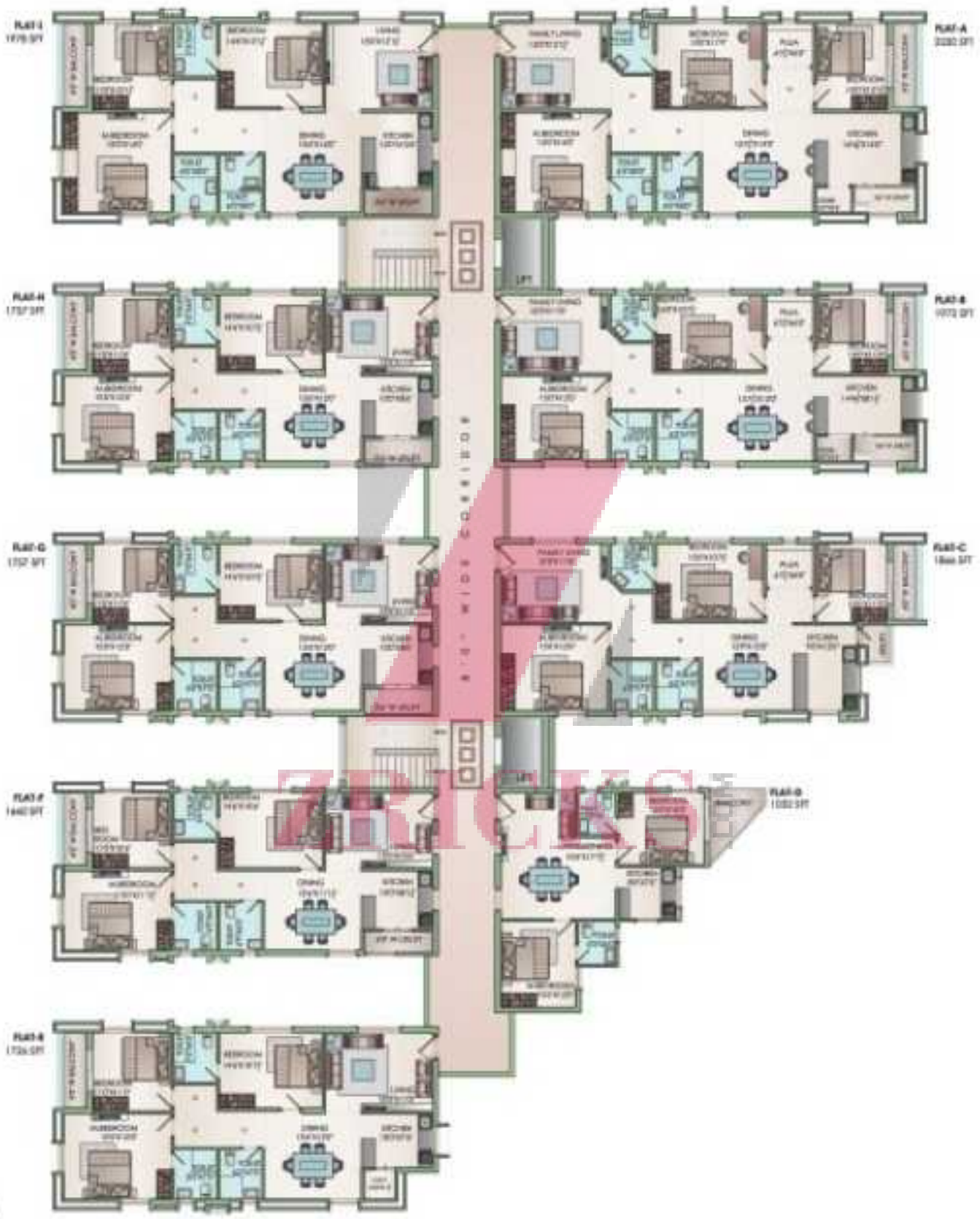
Location of choice  
for those who value time



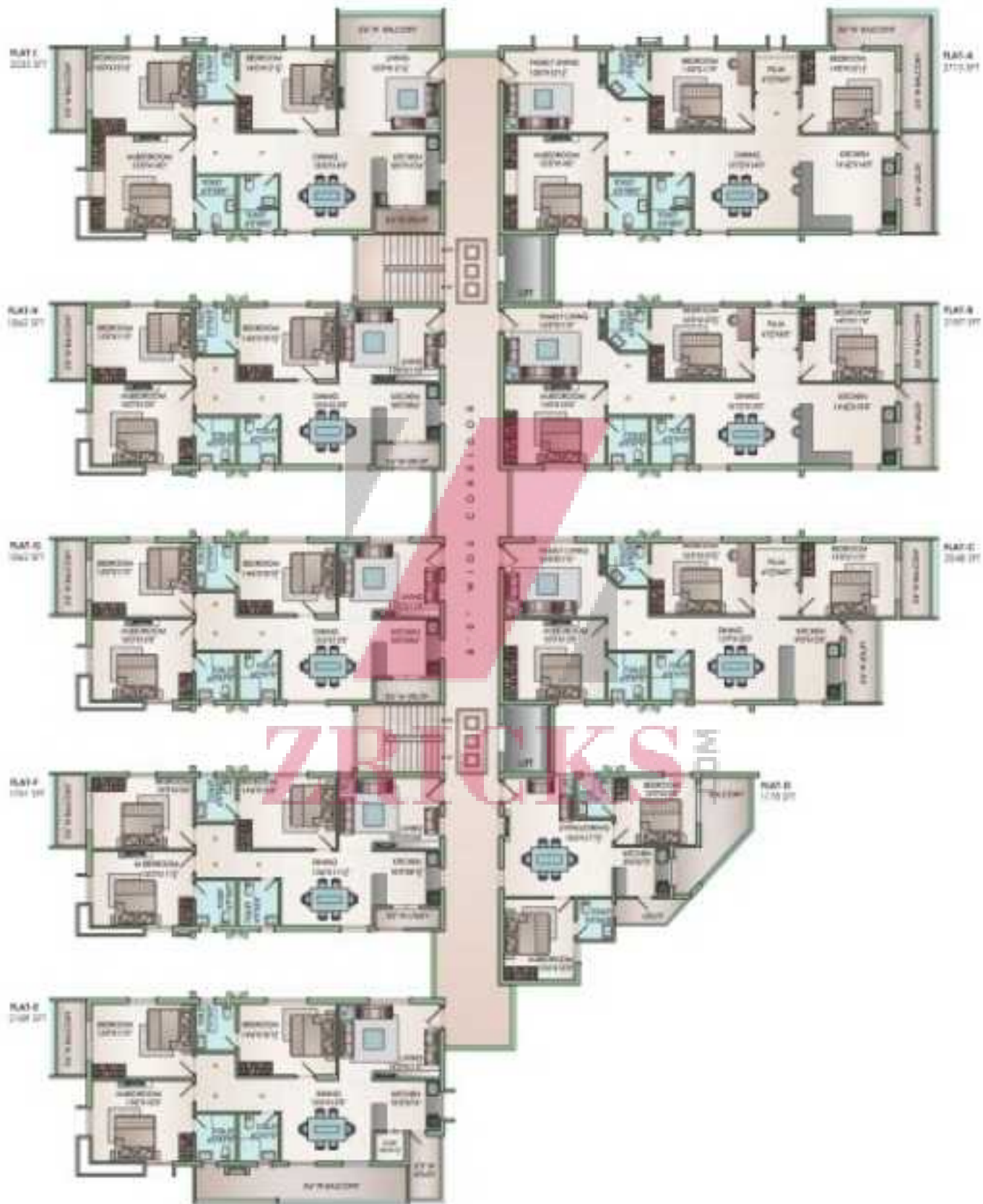
[www.Zricks.com](http://www.Zricks.com)







1<sup>st</sup> Floor



2, 4 & 6 Floor





Ground Floor

## FOUNDATION & STRUCTURE

Superior structural designs. Earthquake resistant as per seismic Zone II, Anti-treatment with 10 year warranty. Cement - Ultratech ACC or Equivalent. Steel-VIZAG TMT/ SREE TMT

## WALL FINISH ON CONCRETE SURFACE

Internal walls with Birla putty finish & external walls with Apex Ultra Paint( ASIAN)/Dr.Fixit- weather proof rain-coated paint (one coat primer and two coats paint)

## BRICKS

Cellular Light weight Red Bricks

## PAINTING

EXTERNAL: Premier quality texture painting with Apex Ultima/weather proof rain-coated.  
INTERNAL: Two coats of Royal shine paint over three coat of Birla Putty with light (Asian)

## FLOORING

LIVING: 3 feet x 3 feet vitrified tiles of RAK/Kajaria/Johnson or equivalent. Marble flooring as per architects advice.

BEDROOMS: Vitrified tiles of Size 2 feet x 2 feet of RAK/Kajaria/Johnson or Equivalent.

KITCHEN: vitrified tiles of RAK/Kajaria/Johnson or Equivalent.

TOILETS: Best quality acid resistant, anti-skid designer tiles (RAK/Kajaria/Johnson)

## DOORS & WINDOWS

MAIN DOOR FRAME: Teak wood frame.

SHUTTER: Teak wood shutters with selected hardware fittings inclusive of electronic locking system.

INTERNAL DOORS: Teak wood frame and branded veneer flush door shutter finished with melamine matt polish and fixed with selected quality hardware fittings.

WINDOWS: UPVC glazed glass sliding door with bucks' shutter and standard hardware. NCL-Wintech or Fenesta or Equivalent

## TOILETS

7 feet high dado with RAK/Kajaria/Johnson 1'0" \*2'0" ceramic tiles wall mounted Ewcs with concealed & washbasin in all toilets with superior brands like Kohler/Toto or equivalent. Provision for geyser in all toilets with CP Fitting or Grohe or Hangshore or Equivalent. ISI specification CPVC plumbing of ASTRAL make or Equivalent. Sanitary & Rain water piping of PVC/GI/C.I as per IS specifications is specified pressure test and other tests for all bathrooms. Manufacturer's warranty extended to customers for all fittings.



## KITCHEN

Kitchen to be provided with a sink mounted on granite 2 counter, glazed tiles dado up to 2' height with Grohe/Hansgrohe fitting or equivalent. Treated Water Supply - Provision for RO system. Chimney and exhaust fan.

## ELECTRICAL

3 phase power for each individual unit with 1 KW power. Concealed copper fireguard wiring (Finolex or Havells). AC points in all bedrooms and living area. Power plugs (MDS Legrand) for cooking range, chimney, microwave, refrigerator, mixer grinder in kitchen.(as per Architect Instructions)

## COMMUNICATIONS

TV provision in master bedrooms and living areas. Wi-Fi connectivity. Telephone points in living and in bedrooms.

## OTHER ITEMS

SS/Toughened glass handrail for staircase balconies. (as per Architect's Instructions).

**www.Zricks.com**